

2010 - 2035

## Metropolitan Transportation Plan



### Important Documents We Produce:

#### Metropolitan Transportation Plan (MTP)

A comprehensive, multimodal "blueprint" for transportation systems and services aimed at meeting the mobility needs of the Hidalgo County Metropolitan Area through the next 25 years. Plans, projects, programs, and policies are proposed as transportation recommendations that reflect solutions to improve the overall quality of life for residents in the Hidalgo County area.

#### Transportation Improvement Program (TIP)

The TIP is required to list all transportation projects in the MPO region that is using federal funds. This includes highway and transit projects and other necessary enhancements such as bicycle and pedestrian projects. The MPO planning partners propose eligible projects for the next four years and the MPO staff and TAC then evaluate the proposed projects and rank them in accordance with a detailed process. The comments received during public meetings are also made as part of the process. The ranking procedure allows the regional highway and transit projects, identified in the plan, to proceed to construction upon final sign off by the Policy Board.

#### Unified Planning Work Program (UPWP)

This document lists all the studies to be undertaken during the coming year. These studies may involve any aspect of transportation including highways, transit and the needs of the disadvantages. A study may be proposed by a participating entity of the MPO. Some studies are proposed in response to federal or state requirements while others are included responding to local needs. The list of proposed studies is reviewed by the Transportation Advisory Committee (TAC) taking into account the MPO priorities, the need to satisfy state and federal requirements, and funding constraints.

#### Congestion Management Process (CMP)

The CMP is a systematic process that provides information on transportation systems performance and alternative strategies to alleviate congestion and enhance mobility. It is a process of effective management and operation of new and existing facilities.

### Citizen Participation

The HCMPO works to give citizens an opportunity to become more involved in the transportation planning process by keeping the public informed about what the MPO and its planning partners are doing for their areas. Citizens are crucial to the success of a transportation system and are encouraged to participate in the planning process through the MPO's public involvement process. By getting involved with the MPO, your city, and by attending the monthly meetings of the Technical Policy Committee (TPC), you will be at the forefront of key decisions as they are being made in the community, and will provide valuable input in shaping the future of transportation in the Rio Grande Valley.

#### How can I get involved?

- ◇ Join the Citizen's Advisory Committee (CAC) which meets every first Thursday of the month at 1:30 pm, or any other of our subcommittees!
- ◇ Attend our public meetings, open houses, and/or events
- ◇ Send us your comments and concerns via email or regular mail
- ◇ Keep up-to-date by visiting our website, or any one of our social media sites.



#### For more information, contact us!

510 S Pleasantview Drive  
Weslaco, Texas 78596  
956.969.5778 ph  
956.969.5821 fax  
info@hcmppo.org



## 101 Guide to the MPO

#### Visit our website or find us on Facebook and Twitter!



www.hcmppo.org



"Hidalgo County MPO"



@ HCMPO

## Hidalgo County Metropolitan Planning Organization

The contents of this document were produced with the intent of providing valuable information the Hidalgo County Metropolitan Planning Organization believes the public benefits from. The contents do not necessarily reflect the views or policies of the Federal Highway Administration, the Federal Transit Administration, the Lower Rio Grande Valley Development Council, or the Texas Department of Transportation. This document was prepared by the Hidalgo County Metropolitan Planning Organization Staff solely for informational purposes.



www.hcmppo.org



UPDATED: August 2012

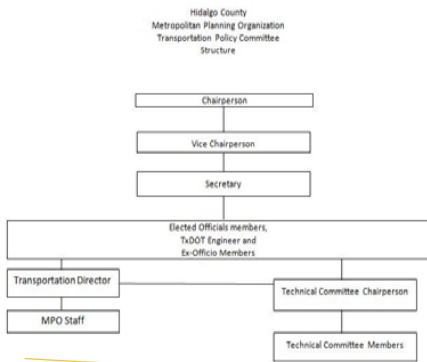
# “A HANDY REFERENCE GUIDE TO THE HCMPO TO GIVE YOU A CLUE OF WHAT WE DO!”

## HCMPO BASICS FOR CITIZENS



### STRUCTURE OF THE MPO

The MPO Staff facilitates the act of reaching a consensus on transportation issues between entities and agencies. In order to incorporate the will of the citizens of the region, the MPO has the duty of providing pertinent information to local agencies and entities with the right tools for making effective decisions. The MPO provides TAC and TPC members with technical information, prepares documents required by federal regulations, promotes and facilitates interactions between agencies and entities. Most importantly, the MPO administers all information regarding urban transportation planning directly to the public by information and educating the general public on issues.



The HCMPO strives to remain sensitive to the detrimental effects of both the natural and the historic/built environment that can result from construction and operation of transportation facilities and systems. Furthermore, the MPO works to ensure that planning efforts support financial constraints coupled with reasonable expenditures, geographical equity in plan implementation, efficient movement of people and goods across international borders. The MPO is committed to develop a transportation system that will enable people to have adequate mobility to pursue a full, well rounded life.

## The Hidalgo County MPO Commitment

### WHAT IS THE TAC?

The Technical Advisory Committee (TAC) was created for the purpose of making planning recommendations to the Policy Committee regarding MPO-generated documents, project selection criteria, special transportation planning studies and other issues for immediate action. The TAC Committee's membership consists of local officials and planners from the cities and the county within the MPO boundary. **The TAC meets every first Tuesday of the month at 1:30 p.m. at the HCMPO offices.**

### WHAT IS THE TPC?

The Transportation Policy Committee (TPC) was created for the purpose of serving as spokespersons for the citizens of the county as well as each respective city in the metropolitan area. The TPC is comprised of elected officials from each city of the MPO, as well as Hidalgo County representatives. The TPC is responsible for creating policies regarding transportation planning issues. **The TPC meets on the fourth Thursday of each month at 5:30 p.m. at the HCMPO offices.**

### WHAT IS THE MPO?

The Hidalgo County MPO is a federally funded program that addresses the mobility goals of the communities within the urbanized area of Hidalgo County. The MPO also serves as a collaborative structure of committees and organizations that creates partnerships to address the region's needs.

### WHAT DOES THE MPO DO?

The HCMPO is responsible for the regional planning process for all modes of transportation. The MPO provides technical assistance to the local governments of Hidalgo County in planning, coordinating, and implementing decisions for this area. Additionally, the MPO administers all federal funds for urban transportation improvements in Hidalgo County, including: road and highway expansion, maintaining the existing infrastructure through pavement management systems, safety transportation planning (including the creation of designated freight and bicycle/pedestrian paths), emergency response planning, rail studies and transit planning.

### WHAT AREA DOES HCMPO COVER?

Federal funds for conducting the transportation planning process are limited to the Hidalgo County Metropolitan Area, which covers 992.76 sq. miles and includes the existing urbanized area and the contiguous area expected to be urbanized within the next 20 years. The Hidalgo County urbanized area currently includes its planning partners, which are 22 cities and the unincorporated areas of Hidalgo County. After the 2000 Census was conducted, the urbanized area was updated to include 716.62 sq. miles and a population of almost 570,000.

- ALAMO
- ALTON
- DONNA
- EDCOUCH
- EDINBURG
- ELSA
- GRANJENO
- HIDALGO
- LA JOYA
- LA VILLA
- MCALLEN
- MERCEDES
- MISSION
- PALMHURT
- PALMVIEW
- PENITAS
- PHARR
- PROGRESO
- PROGRESO LAKES
- SAN JUAN
- SULLIVAN CITY
- WESLACO

